



FAST SERVICE  
& TURN AROUND



ADVANCED  
IN-HOUSE  
ENGINEERING



FIBRE & COPPER  
CABLE  
MANUFACTURING

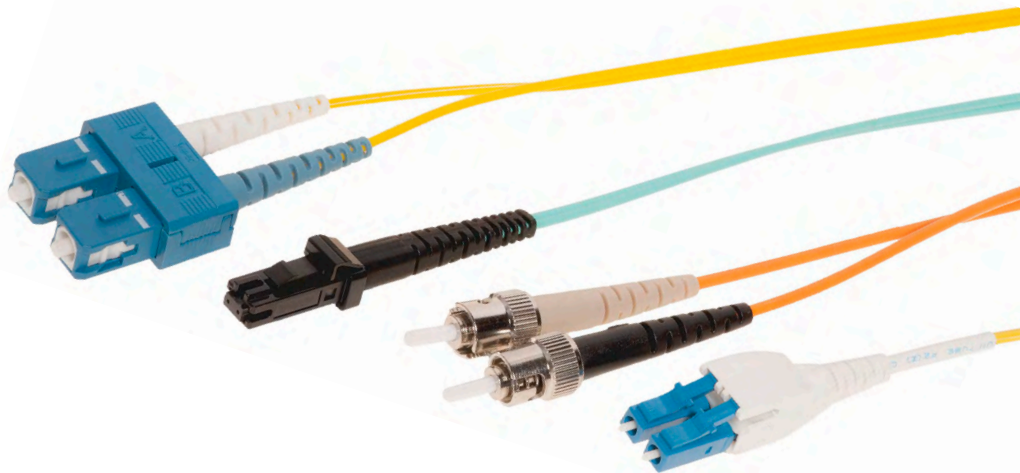


EXPERT TECHNICAL  
SUPPORT & ADVICE



PROUDLY  
AUSTRALIAN  
OWNED & OPERATED

# FIBRE OPTIC PATCH LEADS



JCS TECHNOLOGIES | [sales@jcstech.com.au](mailto:sales@jcstech.com.au) | 02 8878 6600 | [jcstech.com.au](http://jcstech.com.au)



# JCS TECH – QUALITY PRODUCTS YOU CAN TRUST!

## FEATURES

- Resilient and flexible
- LSZH Jacket as stock standard
- Factory-terminated and tested
- Standards based testing provides traceable and repeatable results
- Ultra high performance zirconia ferrules
- Factory terminated under ISO9001 quality control procedures
- Interferometer testing for end-face geometry
- Individually bagged and labelled
- Broad stock holding range
- Specialists in harsh environment / hybrid terminations
- RoHS Compliant
- Corning Glass
- 25 Year Warranty on workmanship

## APPLICATIONS

- Suitable for general indoor use, such as routing connections and patching systems
- Data centre equipment, cross connect and lead-ins
- Termination enclosure to equipment patching

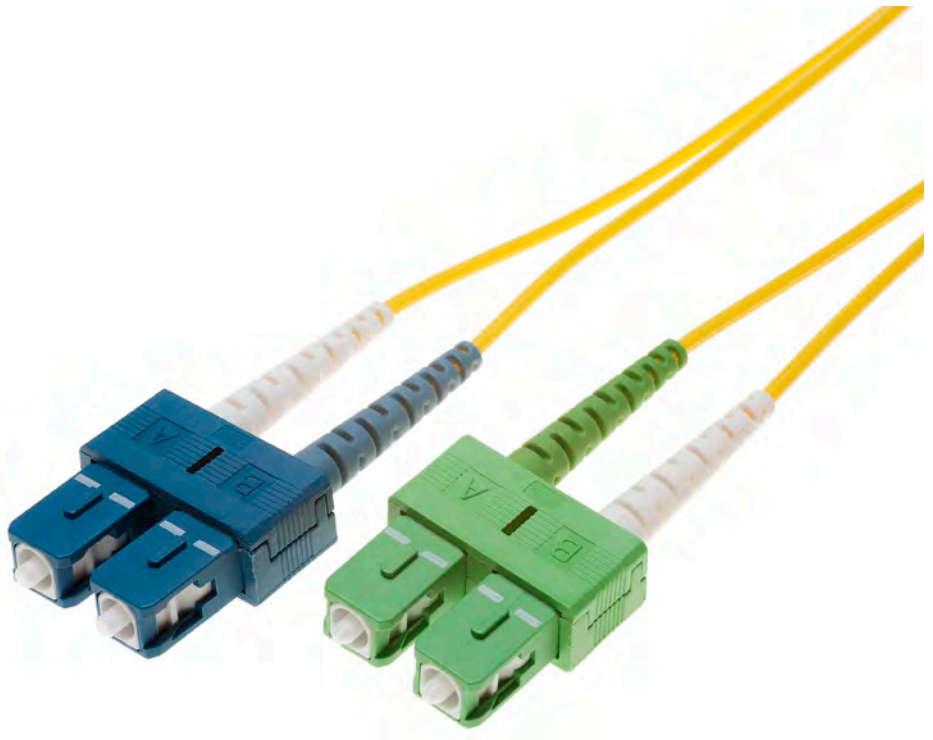
## FIBRE OPTIC PATCH LEADS

JCS Technologies manufactures and supplies high quality, low loss fibre optic leads and assemblies using only the highest grade components, advanced inspection and characterization tools.

All JCS Tech patch leads are factory tested and hold a 25 year guarantee so you can be sure that you receive only the best quality.

JCS Tech patch leads are by standard LSZH and come in a wide variety of connectors and lengths across all modes. IL is max 0.15db to ensure you receive high quality as a standard.

Please contact JCS Sales if you require any special cable construction, connectors styles or mode specifications. JCS Technologies offers a full range including armoured patch leads, Flexi-Boot, LC Secured, reduced diameter and many other variants.



## JCS TECHNOLOGIES IS ISO9001 ICG CERTIFIED



All JCS and technology partner processes are certified to ISO9001, employing advanced test and measurement technology including Interferometer connector end face analysis and return loss testing compliant with and fully traceable to international standards.

JCS cable assemblies are machine polished using the highest quality components to ensure a consistent high quality, long lasting termination that exceeds performance requirements.

# FIBRE OPTIC CONNECTOR TYPES

Typical fibre connector interfaces are LC, SC, and ST in either multimode or single-mode applications. The matrix below refers to those commonly used in Australia market, with custom lengths, colours and types available on request.



JCS also has an in house supply and / termination capability for harsh environment, military, tactical field, industrial, mining and broadcast fibre leads and assemblies.

## TECHNICAL SPECIFICATIONS

### Connector Optical Specifications

Connector Types: LC, SC, ST, FC	Units	MM 850/1300 nm				SM 1310/1550 nm			
		Standard		Low Loss		UPC		APC	
		Typ	Max	Typ	Max	Typ	Max/Min	Typ	Max/Min
<b>Max. Insertion Loss</b>	dB	0.1	0.15	0.1	0.15	0.08	0.15	0.08	0.15
<b>Min. Return Loss</b>	dB	N/A				58	55	70	65

### Cable / Fibre Optical Specifications

Fibre and Cable Optical Parameters			Multimode			Singlemode
Condition	Units	OM1	OM3	OM4	OS1/OS2	
<b>Geometry</b>	core/clad dia.	µm	62.5/125	50/125	50/125	9/125
<b>Standard</b>		TIA/EIA 492AAAA	ITU G651.1	ITU G651.1	ITU G657.A2	
<b>Attenuation</b>	850/1300nm Typical	dB/km	3.0/1.0	3.0/1.0	3.0/1.0	0.36/0.22
	850/1300nm Maxv	dB/km	3.5/1.5	3.5/1.5	3.5/1.5	0.5/0.4
	1550nm	dB/km	-	-	-	0.25
<b>Bandwidth</b>	850nm (LED)	MHz.km	200	1500	3500	-
	1300nm (LED)	MHz.km	500	500	500	-
<b>Bandwidth</b>	850nm (Laser)	MHz.km	-	2000	4700	-
	1300nm (Laser)	MHz.km	-	500	500	-
<b>Min Bend Radius</b>	mm	25	25	25	75	



## Cable / Fibre Mechanical and Environmental Specifications

Cable Parameters	Condition / Unit	3mm		2mm	
		Simplex	Duplex Fig 8	Simplex	Duplex Fig 8
Temperature	Operating			-40/+85	
	Storage	°C		-55/+85	
	Installation			-10/+60	
Impact Resistance	impacts	1000		750	200
Flex Resistance	cycles	7500			
Crush Resistance	N/100mm2	500	1000	500	1000
Flame Retardancy		IEC 60332-1, IEC 60332-3, IEC 1034 1/2, & IEC 60754-1/2			
Diameter	mm	3	2.8*5.7	2	2.0 x 4.1
Weight	kg/km	6.8	13.2	3.5	8.2
Tensile Load	Short Term N	150	300	100	200
	Long Term N	80	200	60	100

JCS Technologies Pigtails and Patch Leads meet the functional requirements of the following standards:

- GR-409-CORE
- TIA-568
- IEC61300-3-4
- GR-326-CORE
- ICEA-S-83-596
- TIA-598
- IEC61300-3-6
- IEC61753-1

# D-STST1M-S2-2YL-S

### CORE COUNT

S - SIMPLEX  
D - DUPLEX

### METRE LENGTH

### FIBRE MODE

S1 - OS1/OS2 G652D  
S2 - OS1/OS2 G657A2  
(Bend Insensitive)  
M1 - OM1  
M3 - OM3  
M4 - OM4

### CORDAGE DIAMETRE

2 - 2MM  
3 - 3MM

S - STOCK/IMPORT  
L - LOCAL TERM

### CONNECTOR TYPE SIDE A AND SIDE B

LC - LC/UPC  
LCU - LC UNIBOOT  
LCA - LC / APC  
LCUH - LC UNIBOOT HD  
LCH - LC DUPLEX HD  
SC - SC / UPC  
SCA - SC / APC  
ST - ST / UPC  
FC - FC / UPC  
FCA - FC / APC  
MTM - MTRJ MALE  
MTF - MTRJ FEMALE  
E2 - E2000 PC  
E2A - E2000/APC  
MU - MU  
ESC - ESCON  
DIN - DIN/PC  
HP - HFBR

### CORD COLOUR

YL - YELLOW  
OR - ORANGE  
AQ - AQUA  
EVT - ERICA VIOLET  
BU - BLUE  
BK - BLACK  
RD - RED  
GN - GREEN  
PK - PINK  
WH - WHITE



## LOCAL MANUFACTURE, SERVICE AND SUPPORT

JCS TECHNOLOGIES PTY LTD | [www.jcstech.com.au](http://www.jcstech.com.au) |  
U1, 5-11 Mellor Street, West Ryde NSW 2114  
T: +61 2 8878 6600 | F: +61 2 9808 2622 | E: [sales@jcstech.com.au](mailto:sales@jcstech.com.au)